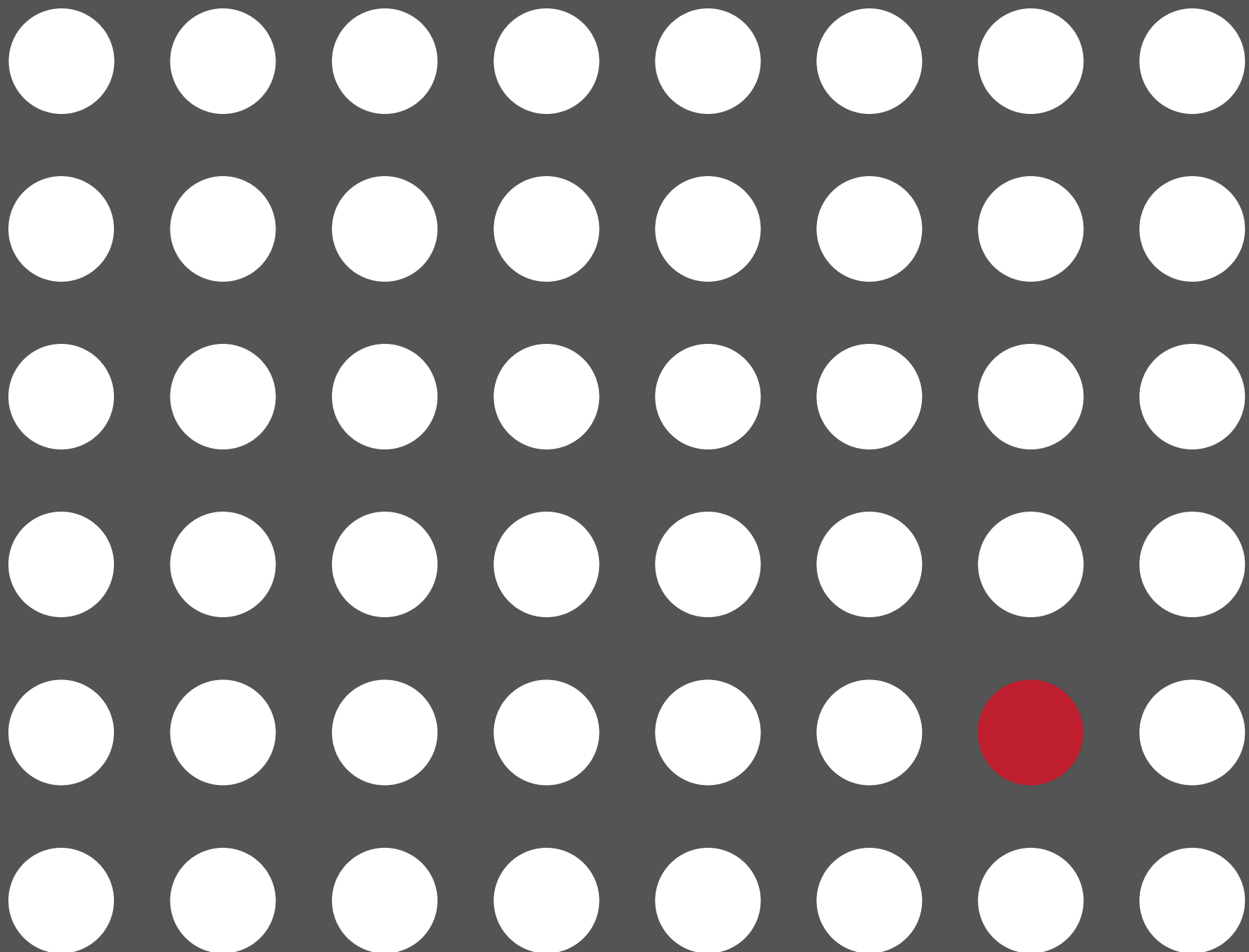


DIRECTORBANK.

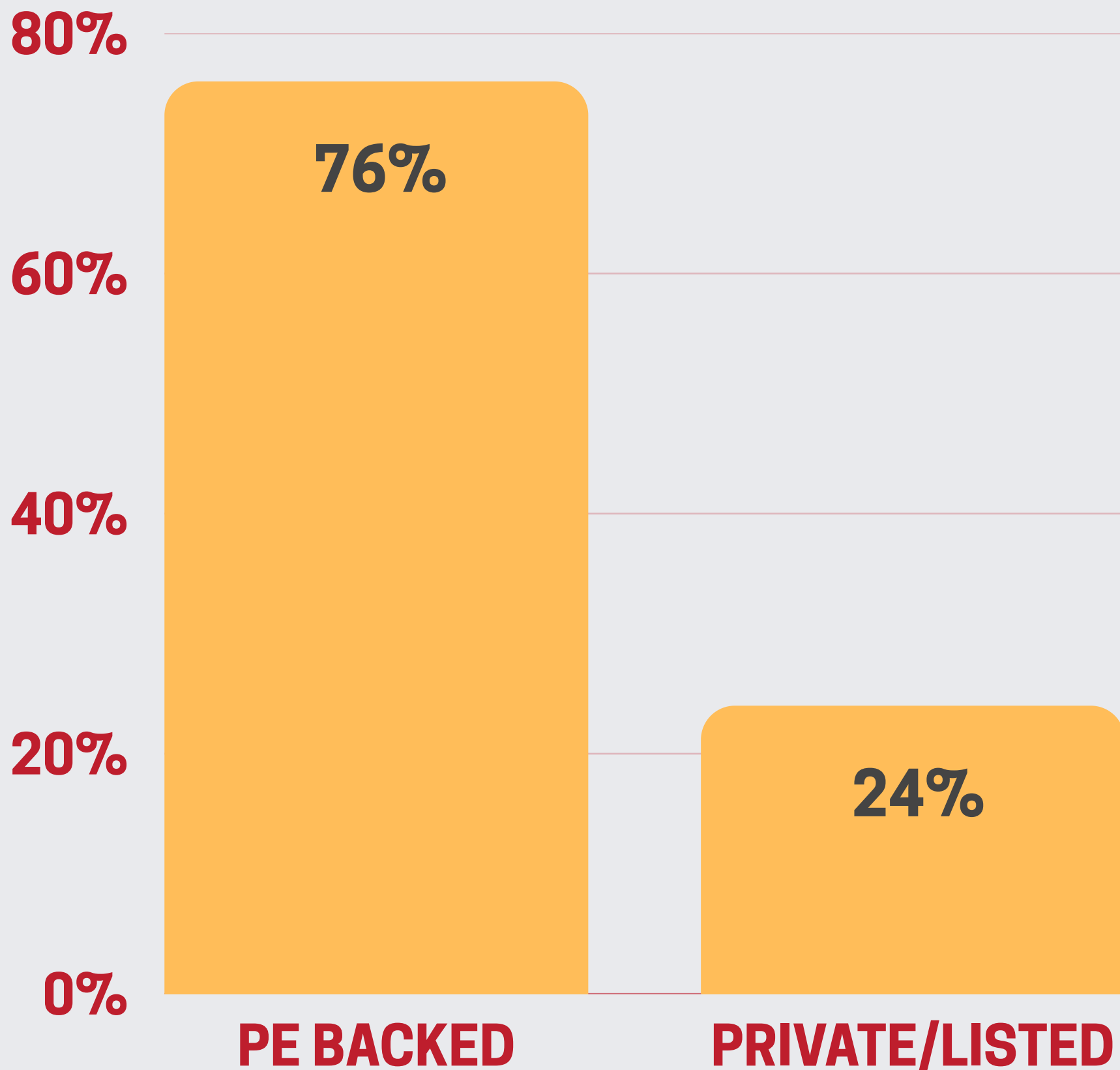
MID-YEAR REVIEW 2025

ACTIVITY & HIGHLIGHTS



01

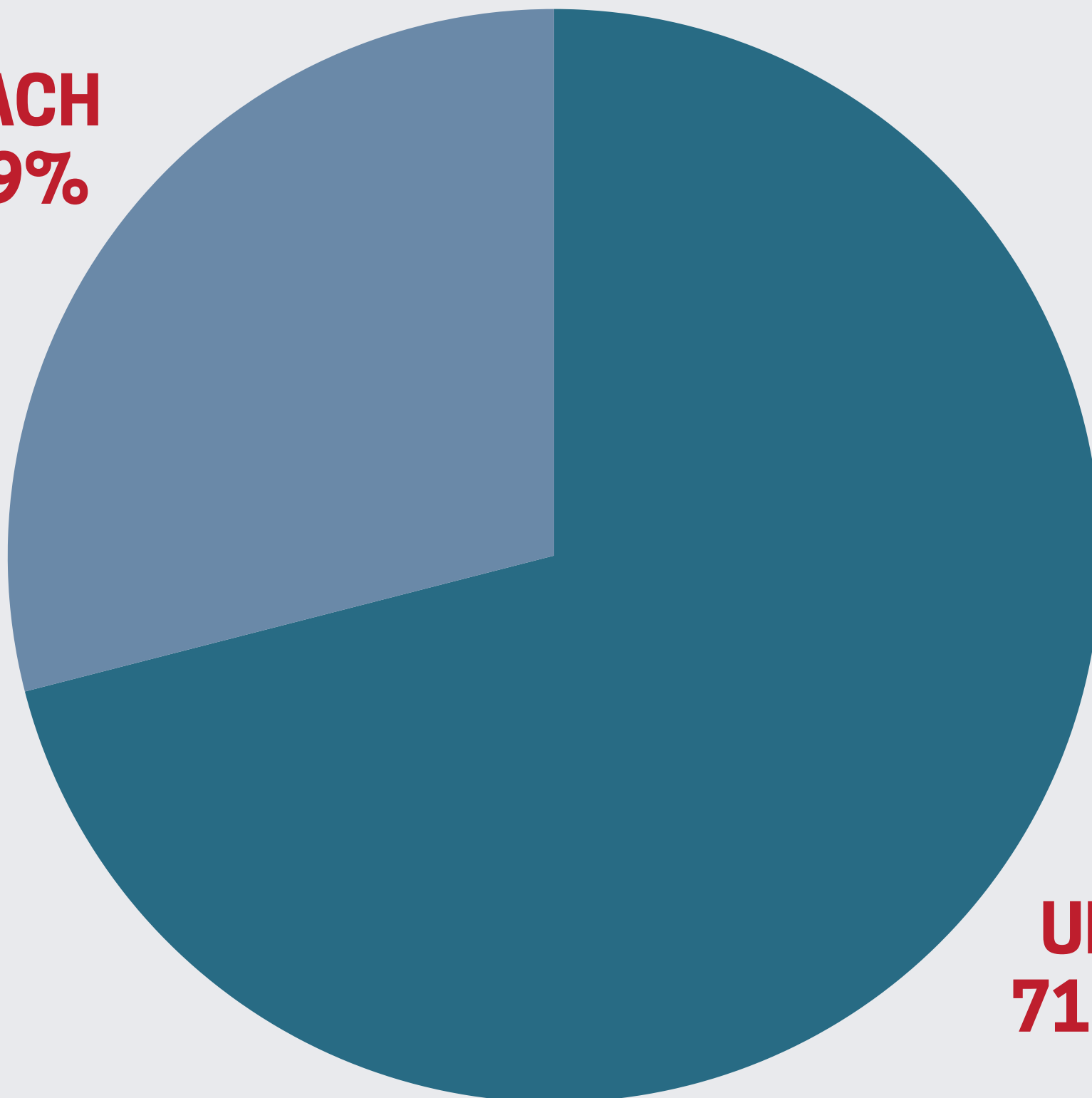
ACTIVITY BY OWNERSHIP.



02

ACTIVITY BY COUNTRY.

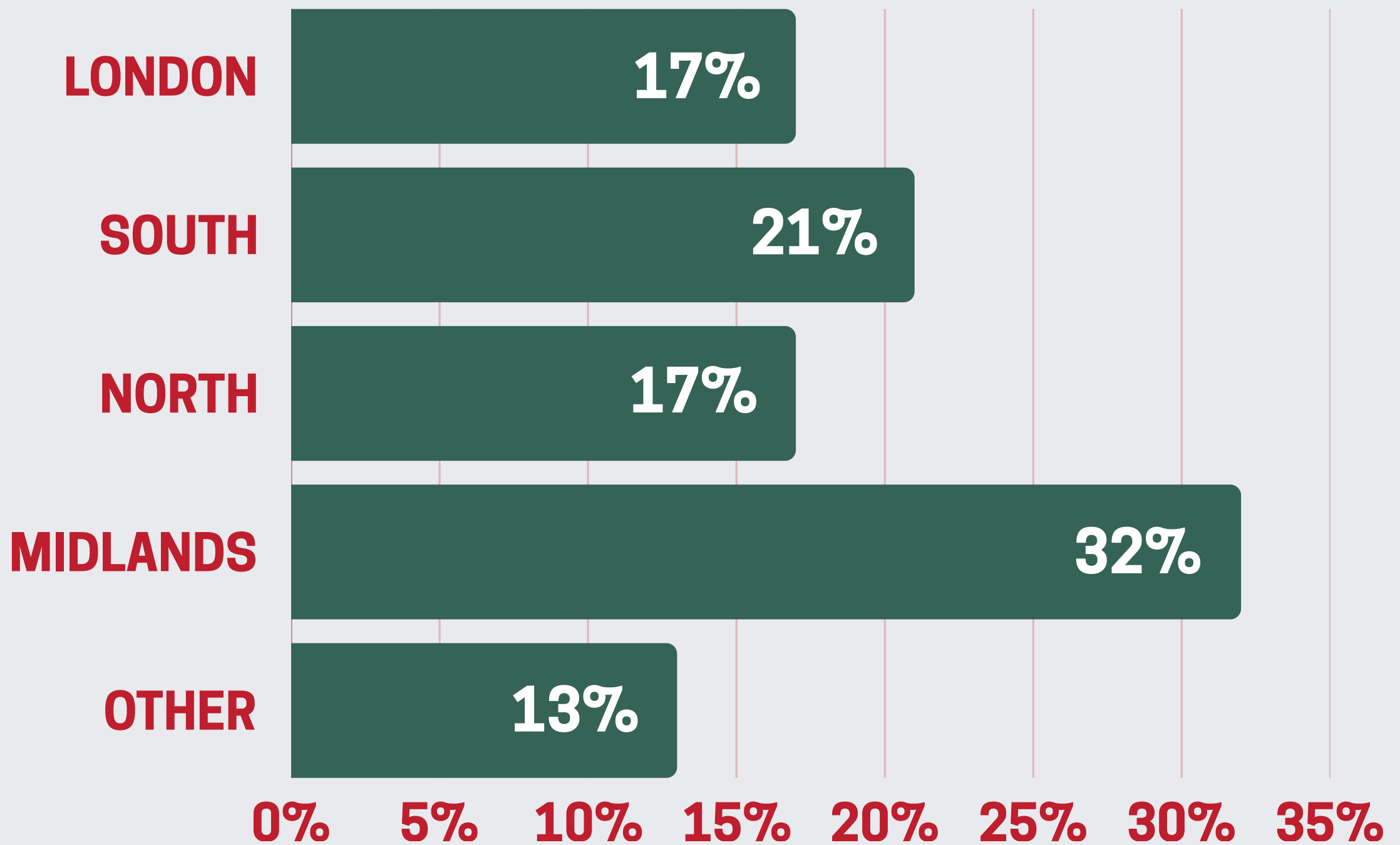
**DACH
29%**



**UK
71%**

03

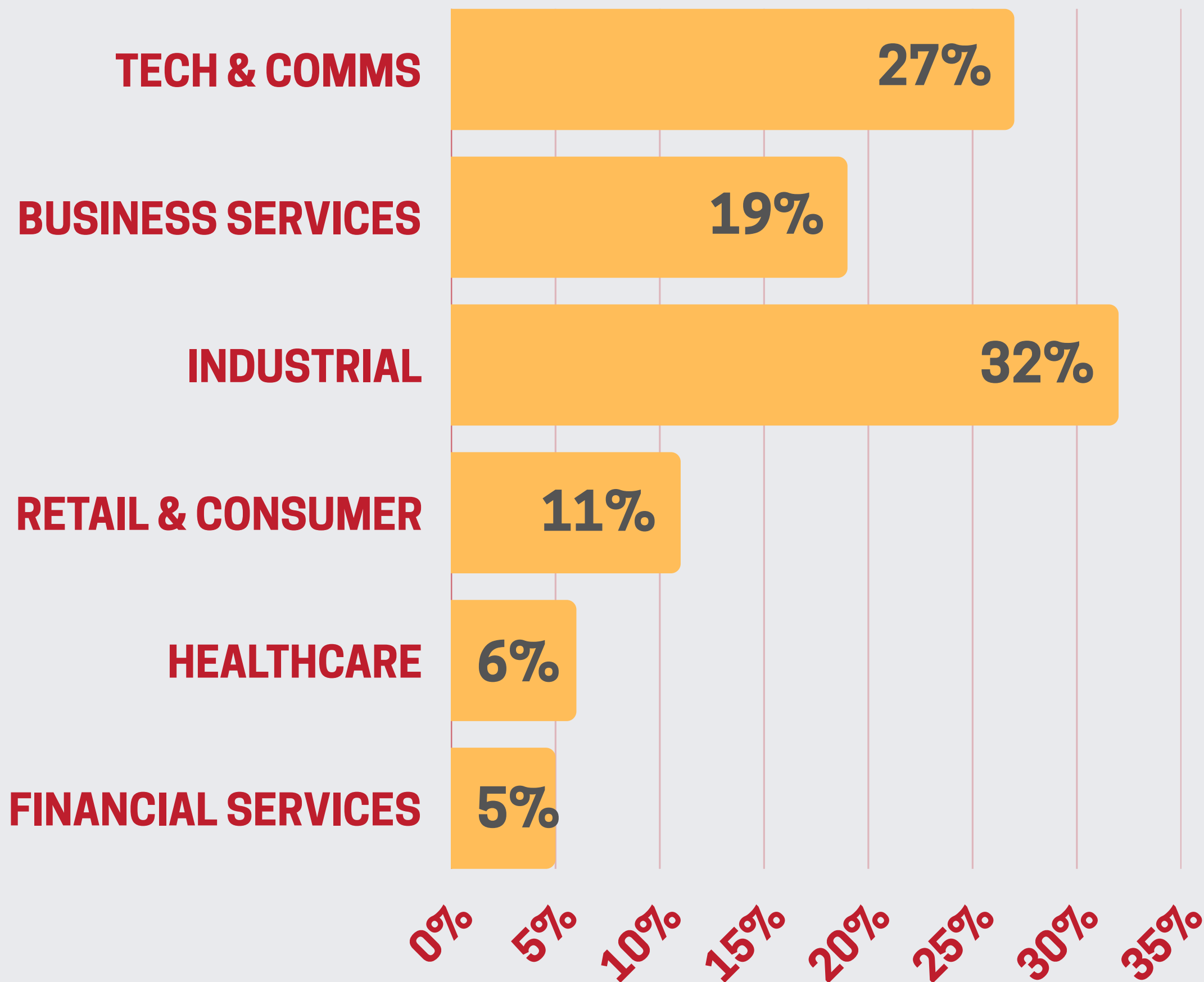
ACTIVITY BY UK REGION.



OTHER - Scotland, Wales, Northern Ireland, CI

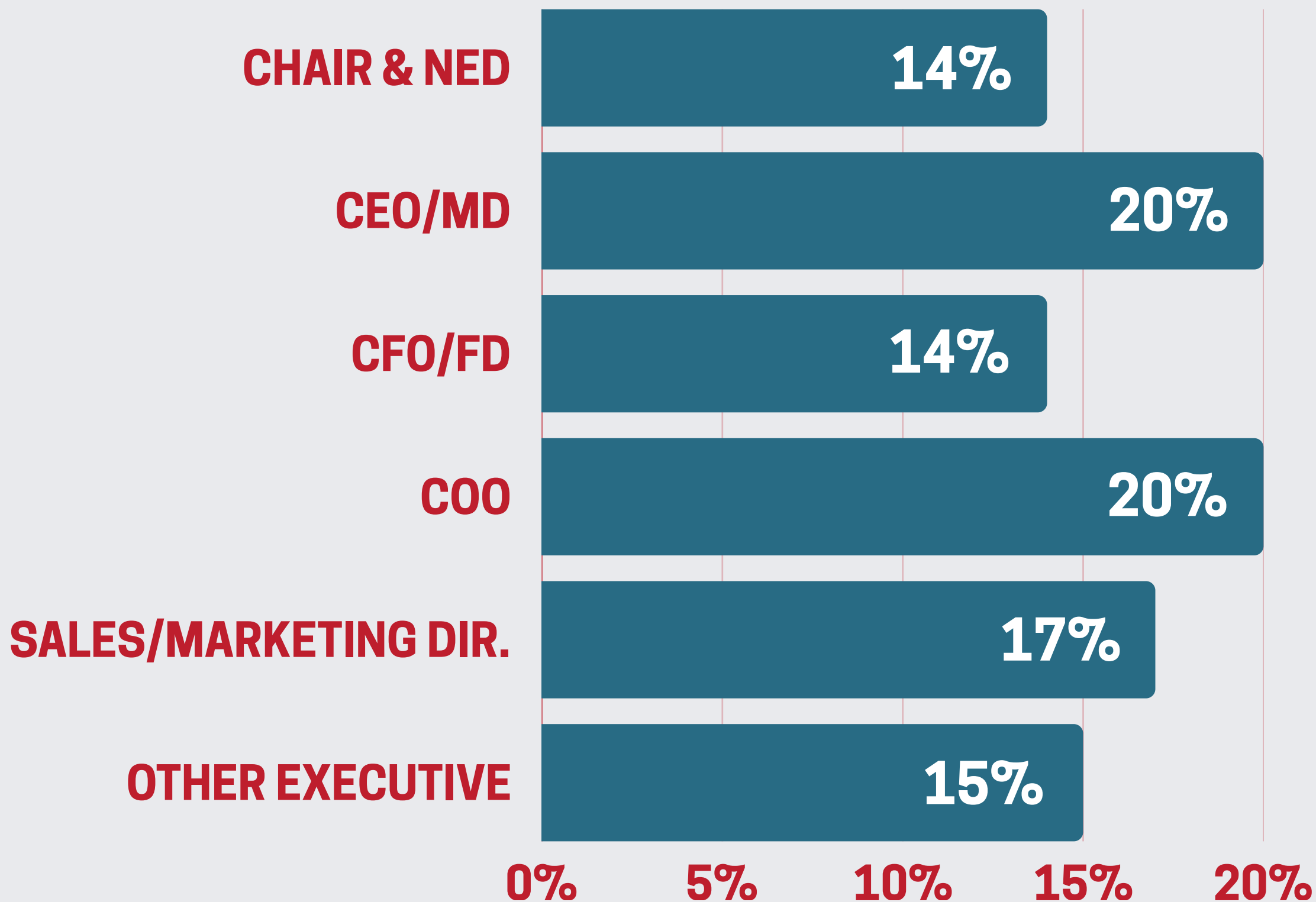
04

ACTIVITY BY SECTOR.



05

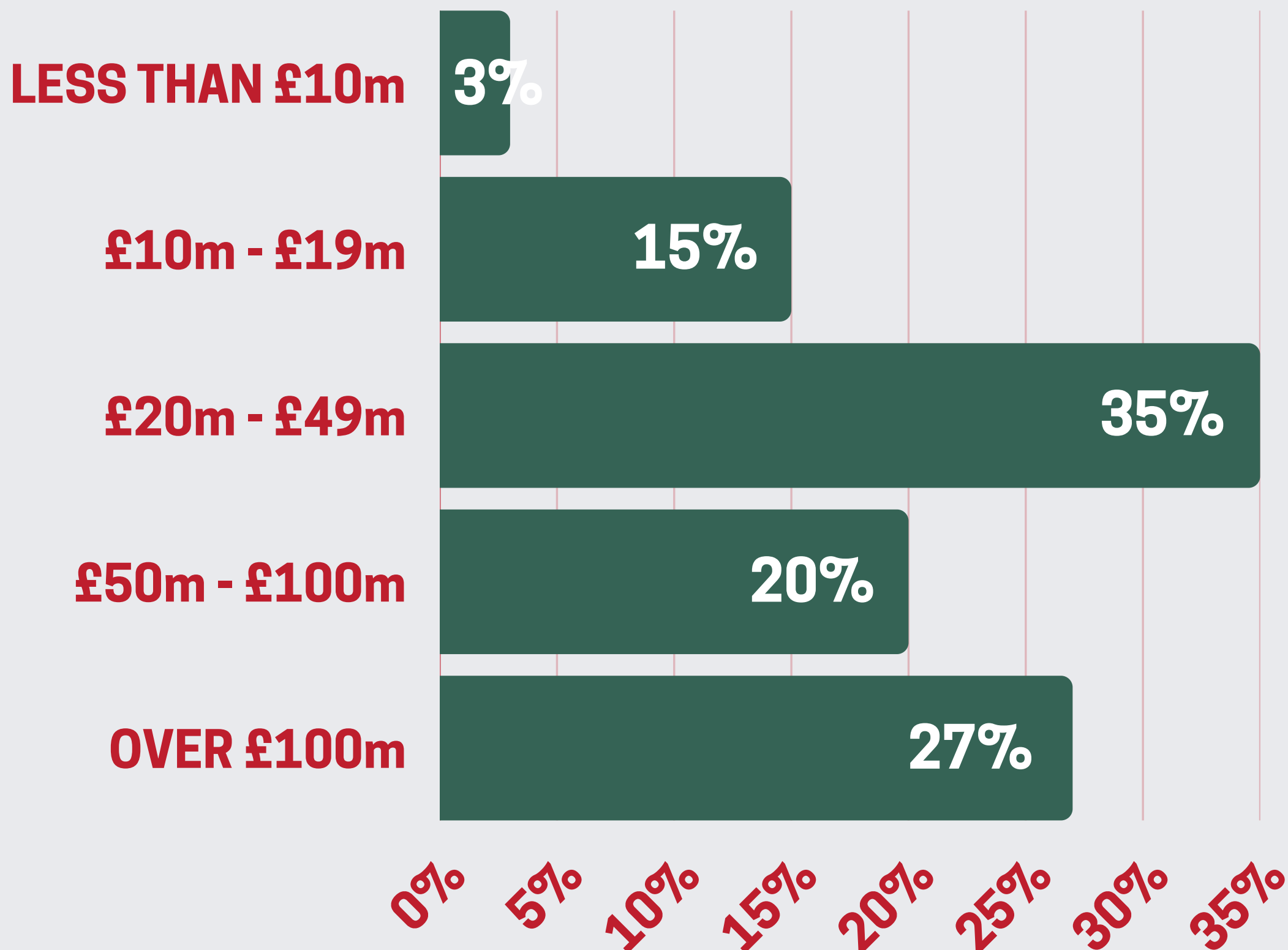
ACTIVITY BY ROLE.



OTHER = Strategy, HR, IT and PMO roles.

06

ACTIVITY BY CLIENT COMPANY TURNOVER.



07

SOME OF OUR SUCCESSFUL PLACEMENTS.

We completed searches across the mid market, sourcing Board-level talent to support our clients' growth objectives.

CEO



**Evora Global
Bridges Fund Management**

NED



**PEAK Technology
HANNOVER Finance**

Group Ops Director

The logo for Fluid Water Group, featuring the text "fluid water group" in white lowercase letters on a dark blue rectangular background. The word "fluid" has a small graphic of three colored dots (blue, red, green) above the 'i'.

Fluid Water Group
Epiris

PMO and CTO

The logo for Sterling Thermal Technology, featuring the word "Sterling" in a large, blue, sans-serif font, with "thermal technology" in a smaller, grey, sans-serif font below it.

**Sterling Thermal
Technology**
Pemberstone Capital Partners

CFO

The logo for Alconex, featuring the word "ALCONEX" in white, uppercase, sans-serif letters on an orange rectangular background. Below the word is the tagline "WE CONNECT YOU" in smaller white letters.

**Alconex Infrastructure
& Solutions**
Buckland Group

COO

The logo for Xperience, featuring a stylized blue 'X' icon followed by the word "Xperience" in orange, lowercase, sans-serif letters.

Xperience
Bowmark Capital

Exec Chair



Prime Light Electrical
Bay Tree Private Equity

COO



Coolr
Growth Capital Partners

NED



Foster Clark Products
Privately-owned

CHAIR



Orri Clinics
Gresham House



08

WE'VE SIGNIFICANTLY INVESTED IN OUR SYSTEMS & PROCESSES.

This June we completed an extensive data transformation project to improve research capabilities, efficiency and client experience. We've also augmented our search processes with new data analytics and psychometric assessment tools to help us identify those candidates most likely to succeed in specific roles, industries and companies. Such investment brings greater precision and speed to our work, and further improves the quality of hiring outcomes for our clients.

**ON BEHALF OF THE ENTIRE
DIRECTORBANK TEAM, OUR
THANKS GO TO OUR CLIENTS,
CANDIDATES AND PARTNERS
FOR THEIR CONTINUED SUPPORT.**

UK. +44 20 7255 7940

GERMANY. +49 69 719 1829 0

enquiries@directorbank.com

Directorbank.com

DIRECTORBANK.